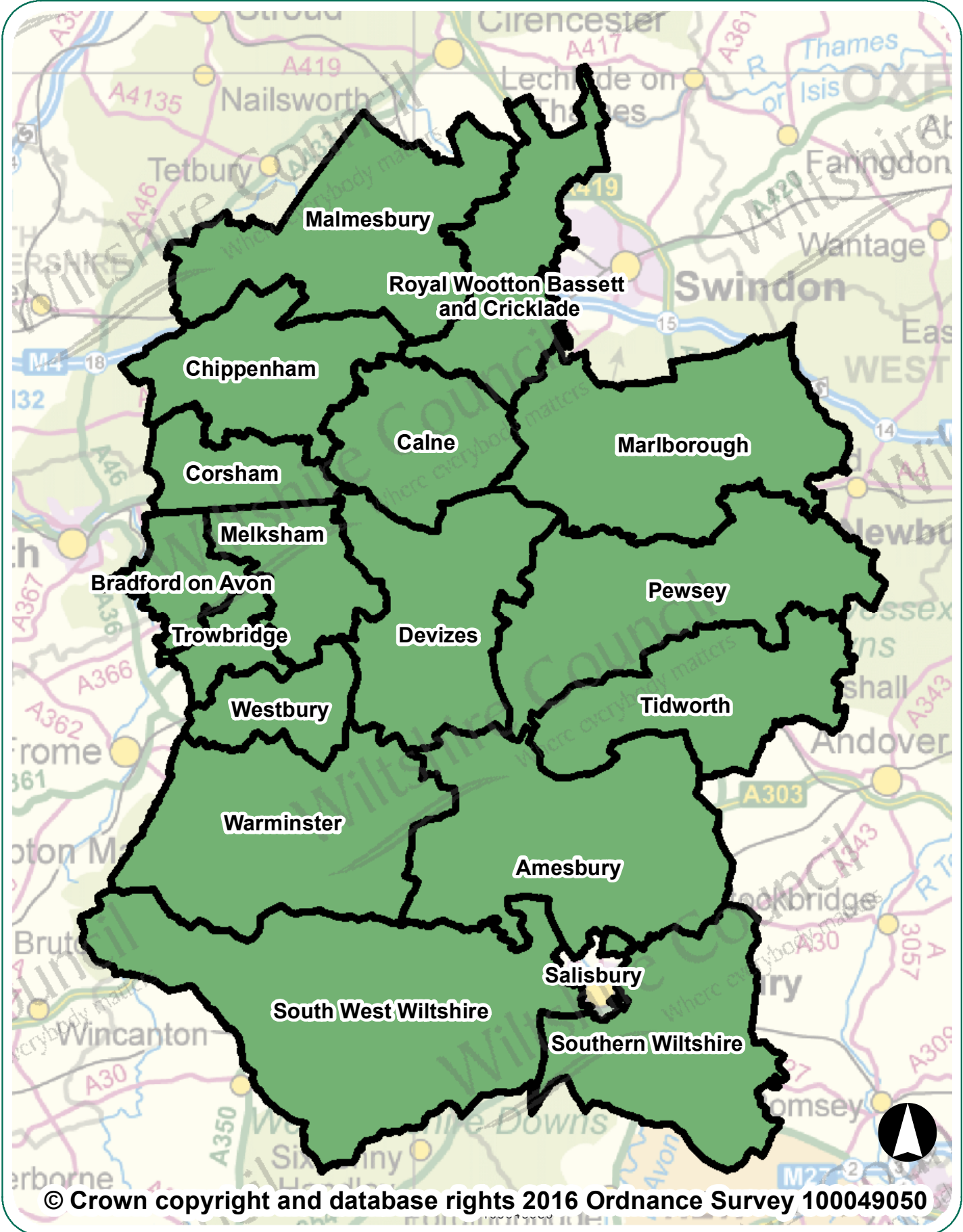


Salisbury Area Board Highway Information



Salisbury Area Board Highway Information

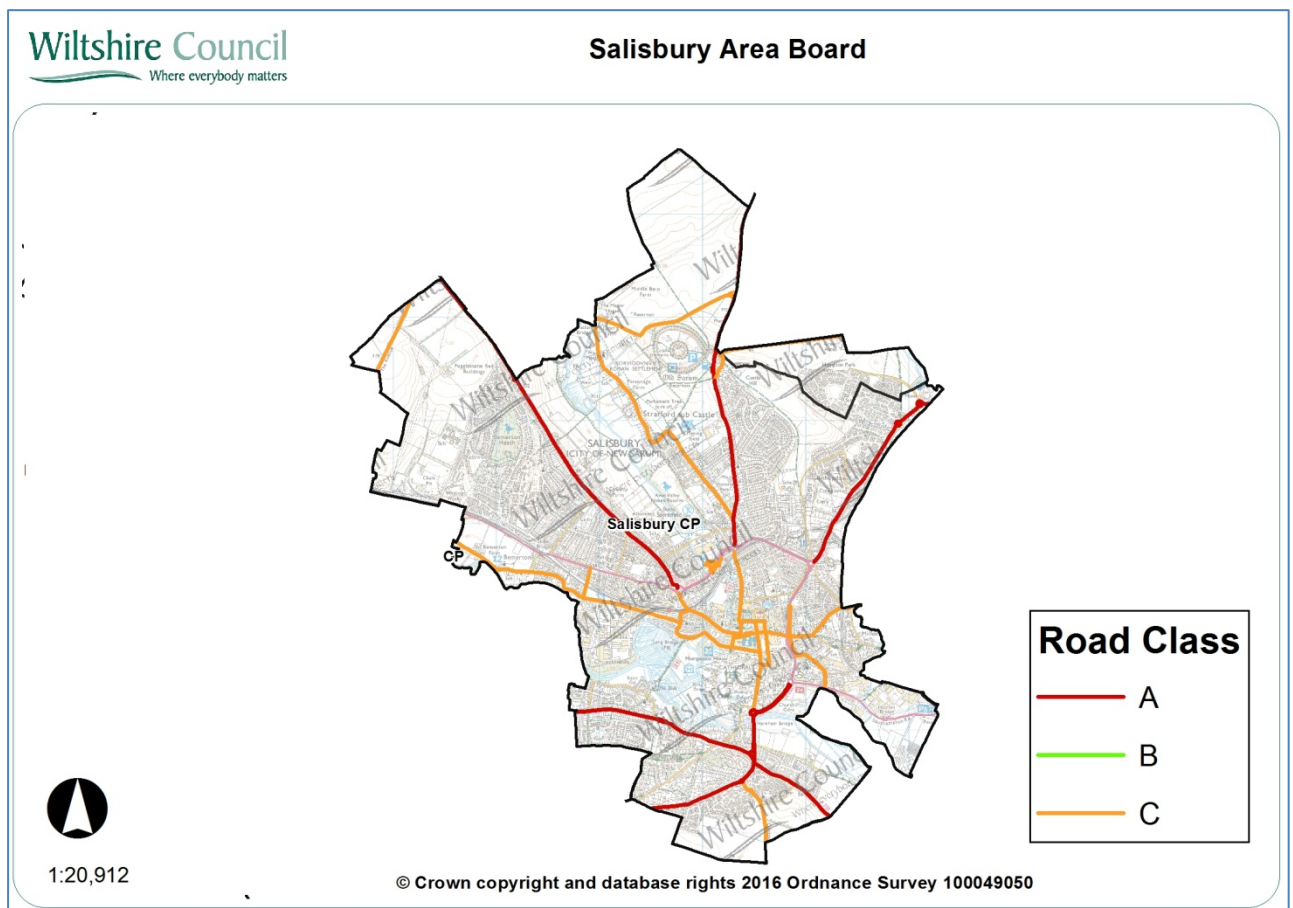
Introduction

This document summarises highway information for your area board. It lists the recent highway and related work carried out by Wiltshire Council, including the road resurfacing carried out during the first two years of the 'Local Highways Investment Fund 2014 – 2020', and includes other information which should be of interest.

Further information on the Council's activities is available at the website www.wiltshire.gov.uk. If you wish to report a specific highway issue please use My Wiltshire. Details are provided at the end of this document.

Parishes in the community area are:

Salisbury (including part of Laverstock & Ford)



Network statistics in your area

Road length by class

Road type	Urban (km)	Rural (km)
A Class Roads	14.29	1.36
B Class Roads	0	0
C Class Roads	13.97	3.1
Unclassified Roads	99.18	0.8
Total	127.44	5.26
	Overall Total	132.7

The council categorises its roads to reflect their importance. This enables an effective assignment of highway inspection frequencies and maintenance standards.

Highway assets in your area

The council keeps an inventory of its highway assets in order to assist planning its highway maintenance. Important statistics relating to your board area are:

Asset Type	Measure
Carriageway	132.7 km
Footways adjacent to road	212 km
Footways (linked)	24.51 km
White road centre lines	89 km
Road kerbs	221 km
Grass verge (maintained)	92 km
Drainage grips	83 number
Drainage pipe grips	8 number
Drainage gullies	5, 492 number
Road signs	2, 817number
Street lights	1, 424 number

Major highway maintenance

Road resurfacing

Wiltshire has over 3,000 miles of road. The Council's 'Local Highways Investment Fund 2014 – 2020' is making a massive investment to improve the condition of the roads in Wiltshire over six years. The programme of work started in April 2014, and is designed and supervised by the Council's consultants Atkins, with the work carried out by our main highway contractors Tarmac and Eurovia.

The work carried out in the first two years of the programme has improved a considerable number of the roads in previously poor condition. The locations of sites treated in recent years are shown below.

Carriageway repairs

As well as resurfacing roads other works are undertaken to make localised repairs to keep the roads safe. The works undertaken in your area since 2014 are shown on the map below.

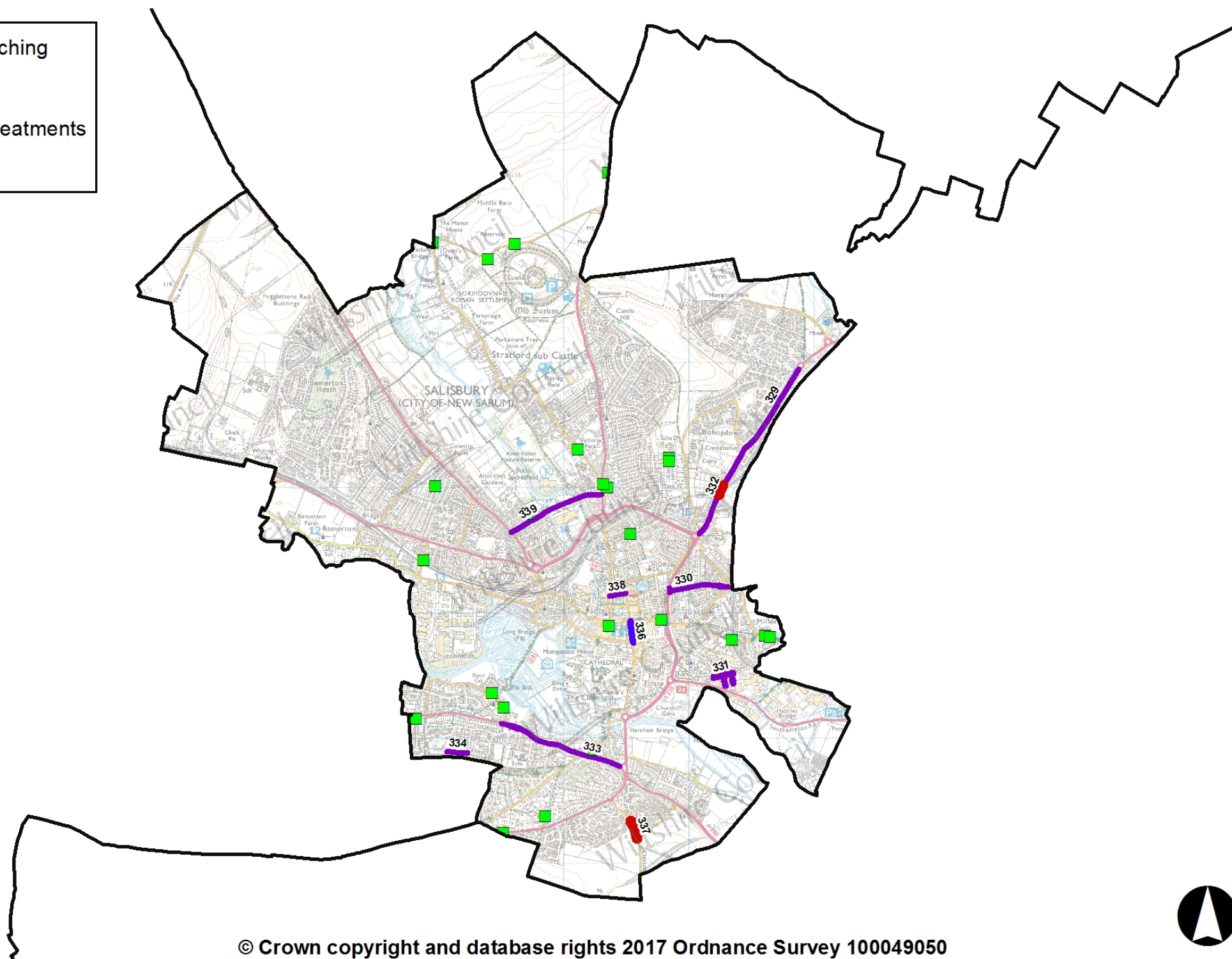
The wet winter and flooding in previous years has resulted in substantial damage to the road network. It is important that serious defects are treated promptly to keep the roads safe. The Council currently operates four Pothole teams that respond to urgent issues to keep the roads safe.

Plan showing major maintenance schemes & hand/machine patching sites completed since 2014



Salisbury Area Board

- Hand/Machine Patching
- Resurfacing
- Skid Resistance Treatments
- Surface Dressing



1:20,902

© Crown copyright and database rights 2017 Ordnance Survey 100049050



Major maintenance completed since 2014

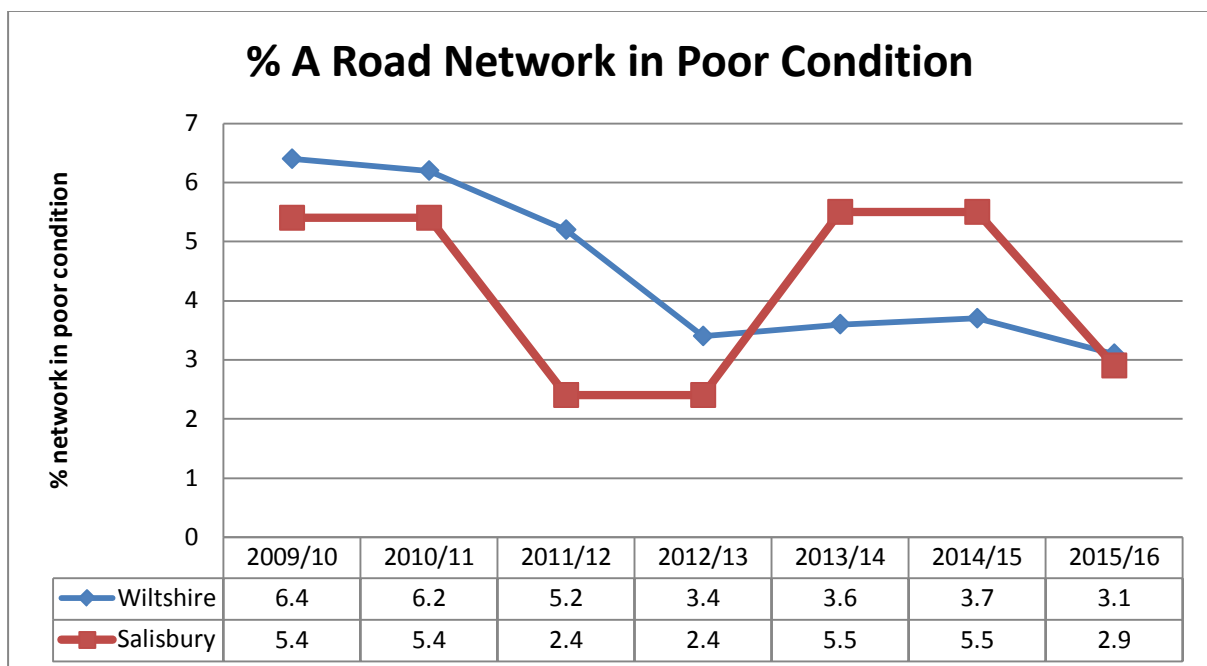
No	Location	Works
329	A30 London Road Salisbury - St Marks Roundabout to St Thomas Roundabout	Resurfacing
330	Kelsey Road	Resurfacing
331	Waterloo Road	Resurfacing
332	Weeping Cross Rbt To Bishopdown Rbt	Skid Resistance Improvements
333	A3094 Netherhampton Road, Salisbury	Resurfacing
334	Sussex Road, Salisbury	Resurfacing
335	Catherine Street, Salisbury	Resurfacing
336	Salisbury - C370 Catherine Street, Salisbury	Surface Dressing
337	Rowbarrow, Salisbury	Skid Resistance Improvements
338	Chipper Lane Salisbury	Resurfacing
339	Ashley Road/ Butts Road, Salisbury	Resurfacing

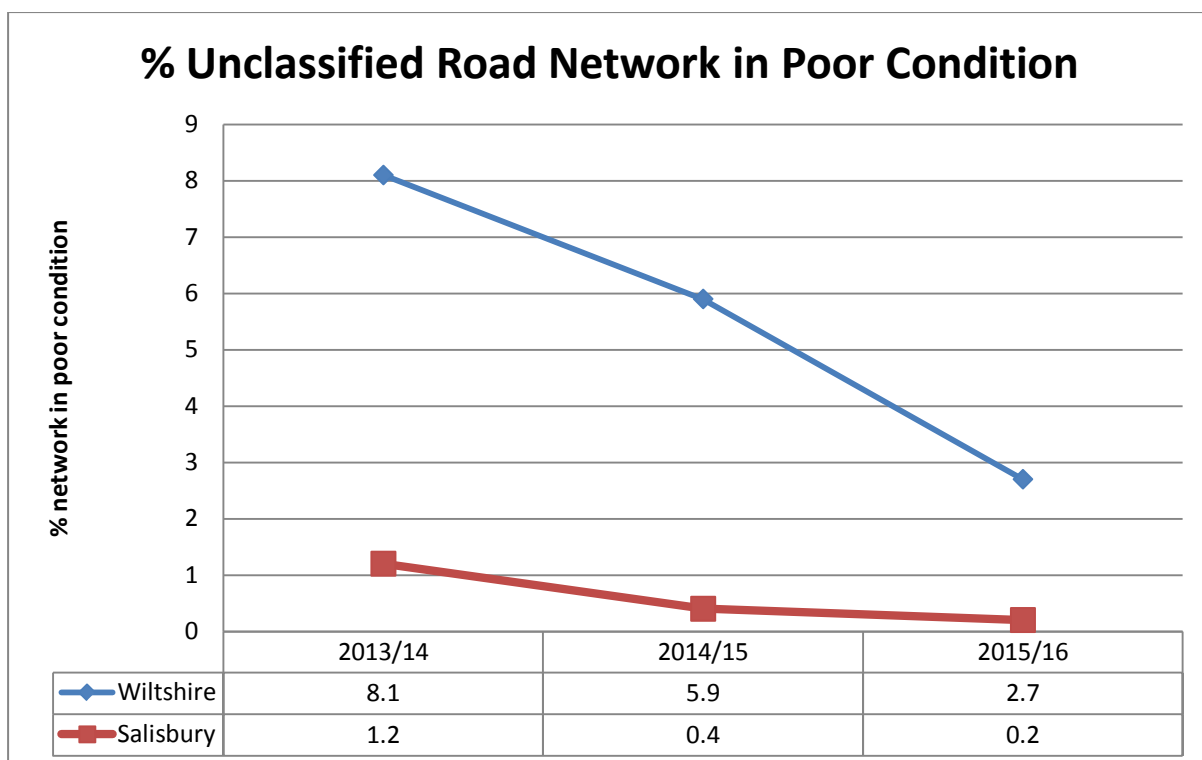
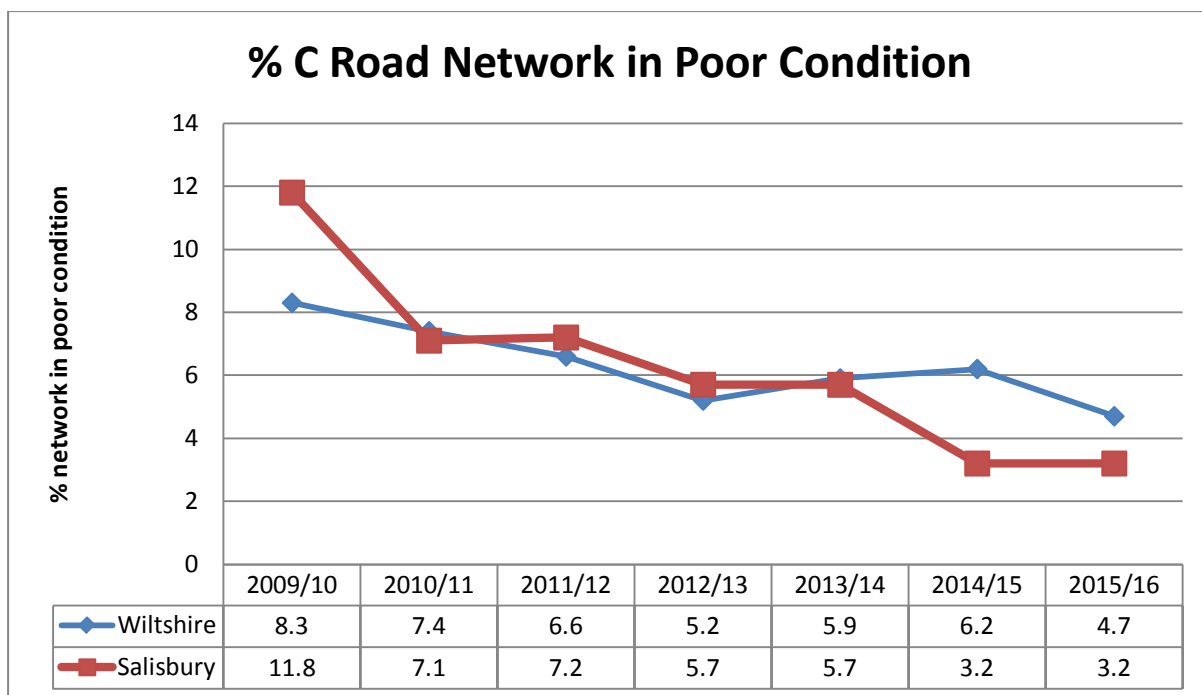
Highway conditions and technical surveys in your area

Roads deteriorate in condition because of various factors, including traffic volumes, ground conditions, and weather and drainage issues. Technical surveys of the condition of the highway network are carried out annually and the information is used to help prioritise schemes. Road safety is the priority, and maintaining adequate skid resistance on the busy high speed roads is vital.

The surveys include the use of a vehicle equipped with lasers and cameras to record road surface condition, which allows us to report on road conditions to the Department for Transport and to prioritise maintenance work. Other surveys include measuring skid resistance on the busier roads.

The road conditions in your area are shown below. It should be noted that low numbers are good because it indicates that less road length should be considered for treatment. More detailed information is shown in Appendix A.





Integrated transport, bridge and drainage works

Integrated transport

The Council's traffic engineering team work with our contractors to plan and deliver a range of projects to the local community, most notably through the Area Boards and Community Area Transport Groups (CATGs). The schemes range in size and complexity from simple sign installation through to more complex road safety and improvement schemes.

Bridges

The Council regularly inspects its bridges and other highway structures. There is a programme of renewal and refurbishment works to keep them in good condition, as well as having to respond to damage caused by collisions.

Drainage

Programmes of drainage investigations, repairs and flood alleviation schemes are undertaken throughout the year, but the flooding in recent years has meant that there has been a need to respond immediately to flooding issues, as well as dealing with previously identified problem sites. The drainage improvement and flood alleviation work is co-ordinated through the Council's Operational Flood Working Groups that include the Environment Agency, Wessex Water, other organisations and stakeholders.

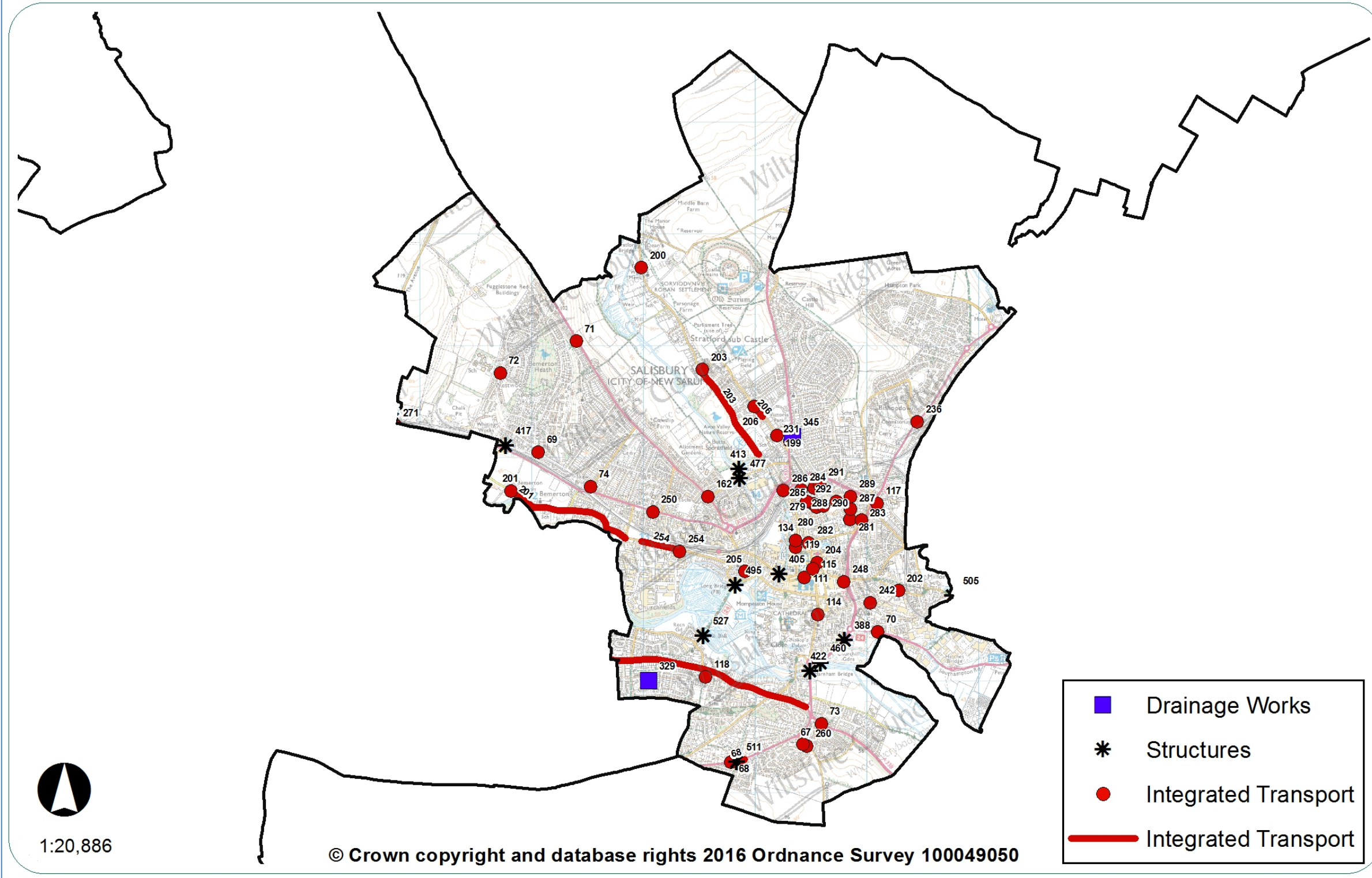
Recent work in your area

The Integrated Transport, Bridge and Drainage schemes carried out in your area since 2015 are listed below.

Plan showing completed integrated transport, bridge and drainage schemes since 2015



Salisbury Area Board



Integrated transport schemes since 2015

No	Location	Description
199	Stratford Road, Salisbury	Pedestrian crossing at South Wilts Grammar School
200	Stratford	Statford Sub castle village gates
201	Salisbury	Lower Bemerton 20mph speed limit implementation
202	Salisbury	Shady Bower 20mph speed limit implementation
203	Salisbury	Avon Valley Path improved cyclerooute signs
204	Salisbury	Winchester street relocation of signs
205	Salisbury	Harcourt Terrace improved cycle route signs
206	Salisbury	Stratford Road tree bypasses
231	A345 Salisbury	Castle Road / Cornwall Road
236	A30 Barrington Road	Substantive Scheme A30 Barrington Road signals
242	Salisbury	St Martin's build out on Tollgate Road
248	Salisbury	Culver street car park additional cycle route signs
250	Salisbury	Charnwood Road private road sign
254	Salisbury	Churchfields ind est weight limit signs
260	Salisbury	Coombe Road / Odstock Road - direction signs
279	Salisbury	Residents parking zone A Salisbury - removal of NWAAT signs Albany Road
280	Salisbury	Residents parking zone A Salisbury - removal of NWAAT signs Belle Vue Road
281	Salisbury	Residents parking zone A Salisbury - removal of NWAAT signs College Street
282	Salisbury	Residents parking zone A Salisbury - removal of NWAAT signs Endless Street
283	Salisbury	Residents parking zone A Salisbury - removal of NWAAT signs Estcourt Street
284	Salisbury	Residents parking zone A Salisbury - removal of NWAAT signs Hamilton Road
285	Salisbury	Residents parking zone A Salisbury - removal of

Salisbury Area Board Highway Information

		NWAAT signs Marlborough Road
286	Salisbury	Residents parking zone A Salisbury - removal of NWAAT signs Nelson road
287	Salisbury	Residents parking zone A Salisbury - removal of NWAAT signs Park Street
288	Salisbury	Residents parking zone A Salisbury - removal of NWAAT signs Queens Road
289	Salisbury	Residents parking zone A Salisbury - removal of NWAAT signs St Mark's Road
290	Salisbury	Residents parking zone A Salisbury - removal of NWAAT signs Swaynes Close
291	Salisbury	Residents parking zone A Salisbury - removal of NWAAT signs Woodstock Road
292	Salisbury	Residents parking zone A Salisbury - removal of NWAAT signs Wyndham Road
67	Salisbury	Odstock Road Ridings Mead crossing point
68	Salisbury	Coombe Road pedestrian crossing warning signs
69	Salisbury	Bus shelter improvements various locations Pembroke Rd
70	Salisbury	Bus shelter improvements various locations Southampton Rd
71	Salisbury	Bus shelter improvements various locations Devizes rd
72	Salisbury	Bus shelter improvements various locations Westwood Rd
73	Salisbury	London road / Downton road cycle awareness at Filling stations
74	Salisbury	Roman Road Pembroke road amendments to traffic island
111	Salisbury	Salisbury New Canal - Loading & Bus Parking Signs
114	Salisbury	Exeter Street TTRO coach parking
115	Salisbury	Queen Street Salisbury
117	Salisbury	Chafyn Grove school direction signs
118	Salisbury	Parsonage Green waiting restrictions

119	Salisbury	Castle Street bus stop flag pole
134	Salisbury	Castle Street erection of sign post and loading only sign
162	Salisbury	Various roads - directions signs to Five Rivers Campus

Bridge schemes since 2014

No	Location	Description
388	Salisbury	Greyfriars Subway ongoing maintenance
405	Salisbury	Fisherton St Bridge Salisbury, Trial holes
413	Salisbury	Summerlock Head Footbridge, Replacement Works
417	Bemerton	Incursion work - Pullman Drive
422	Salisbury	New Bridge Harnham Trial Holes for joints
460	Salisbury	Churchil Gardens South, Repair / strengthen parapet
477	Salisbury	Ashley Road Bridge parapet repairs
495	Salisbury	Long Bridge, Approach rail replacement works
505	Laverstock & Ford	Milford Mill Bridge pilaster repair
511	Salisbury	Coombe Road, Post and handrail replacement
527	Salisbury	Harnham Mill

Drainage works since 2015

No	Location	Description
329	Salisbury	New parking bays and upgrade to SW system
345	Salisbury	New Gully and connecting pipework

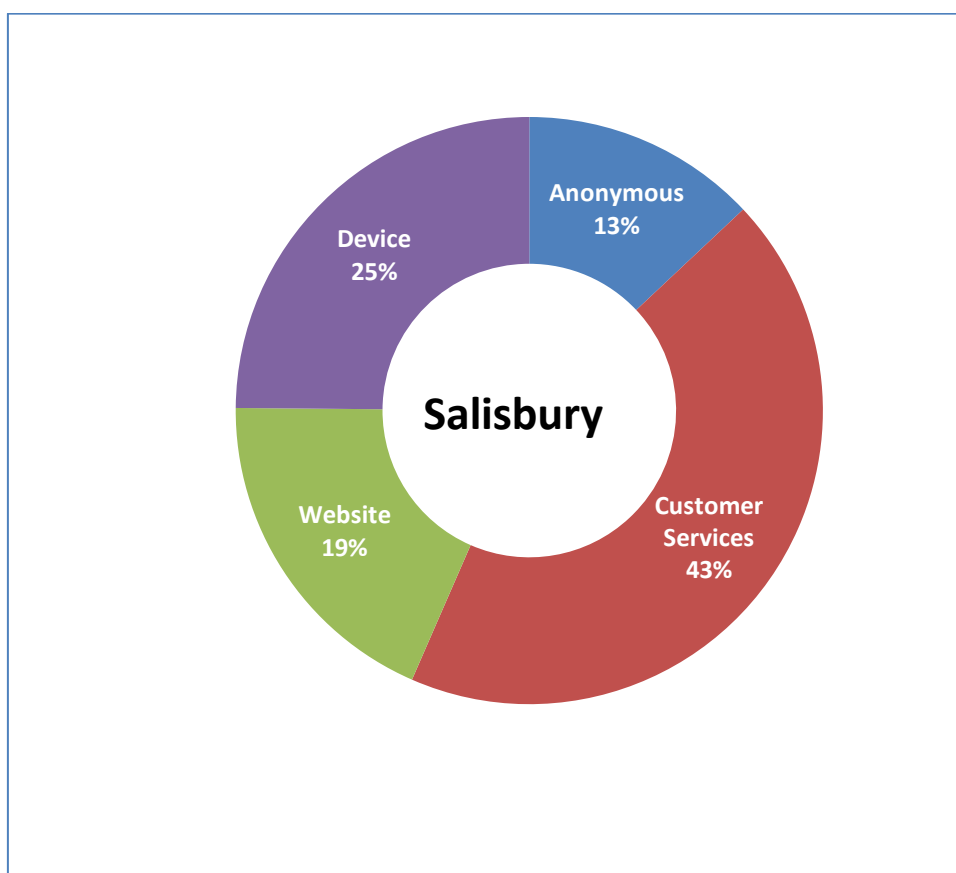
My Wiltshire



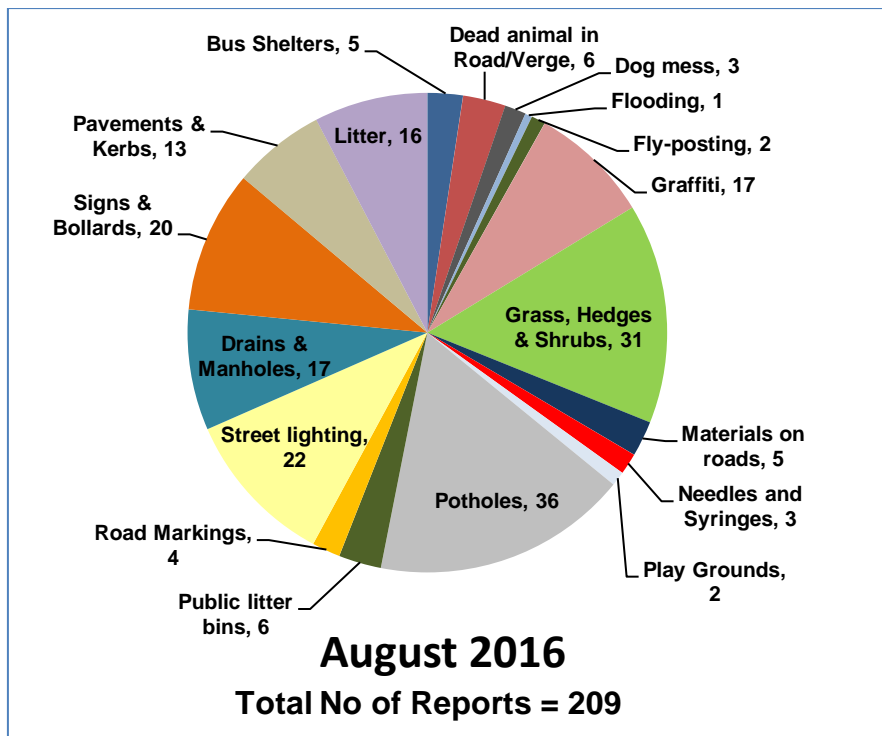
My Wiltshire provides an easy way to report highway issues, including using the Council's website. We have an app so you can report on the go using your smartphone. The My Wiltshire app is available to download at both the [App Store](#) (for iPhones and iPads), from [Google Play](#)[™] (for Android phones) and Windows Store. You can attach information such as photos or videos and pinpoint the location of your report using the mapping software on your phone.

A summary of recent reports in your area is shown below, and further details are shown in Appendix B.

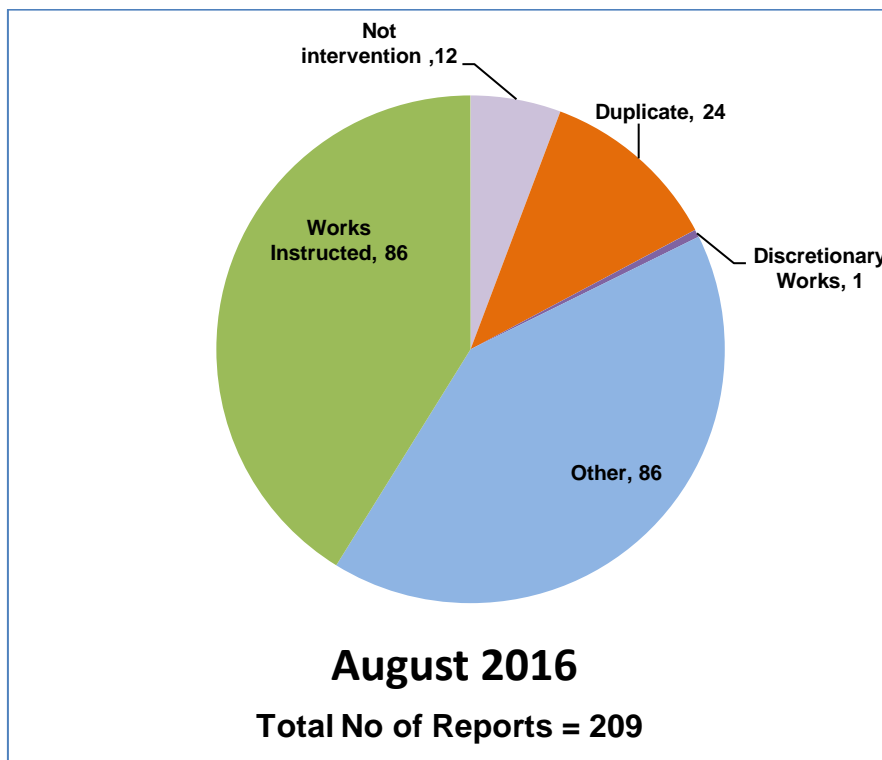
Customer reporting methods in your area



Customer reports in your area for the month of August 2016



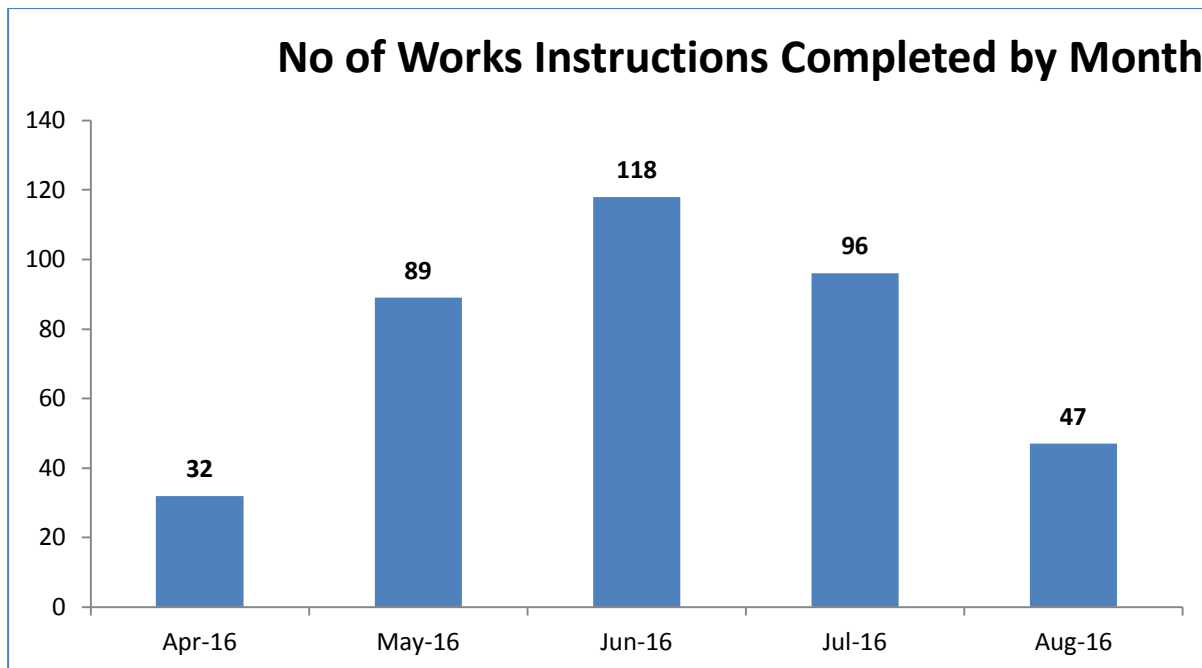
Actions following recent reports in your area



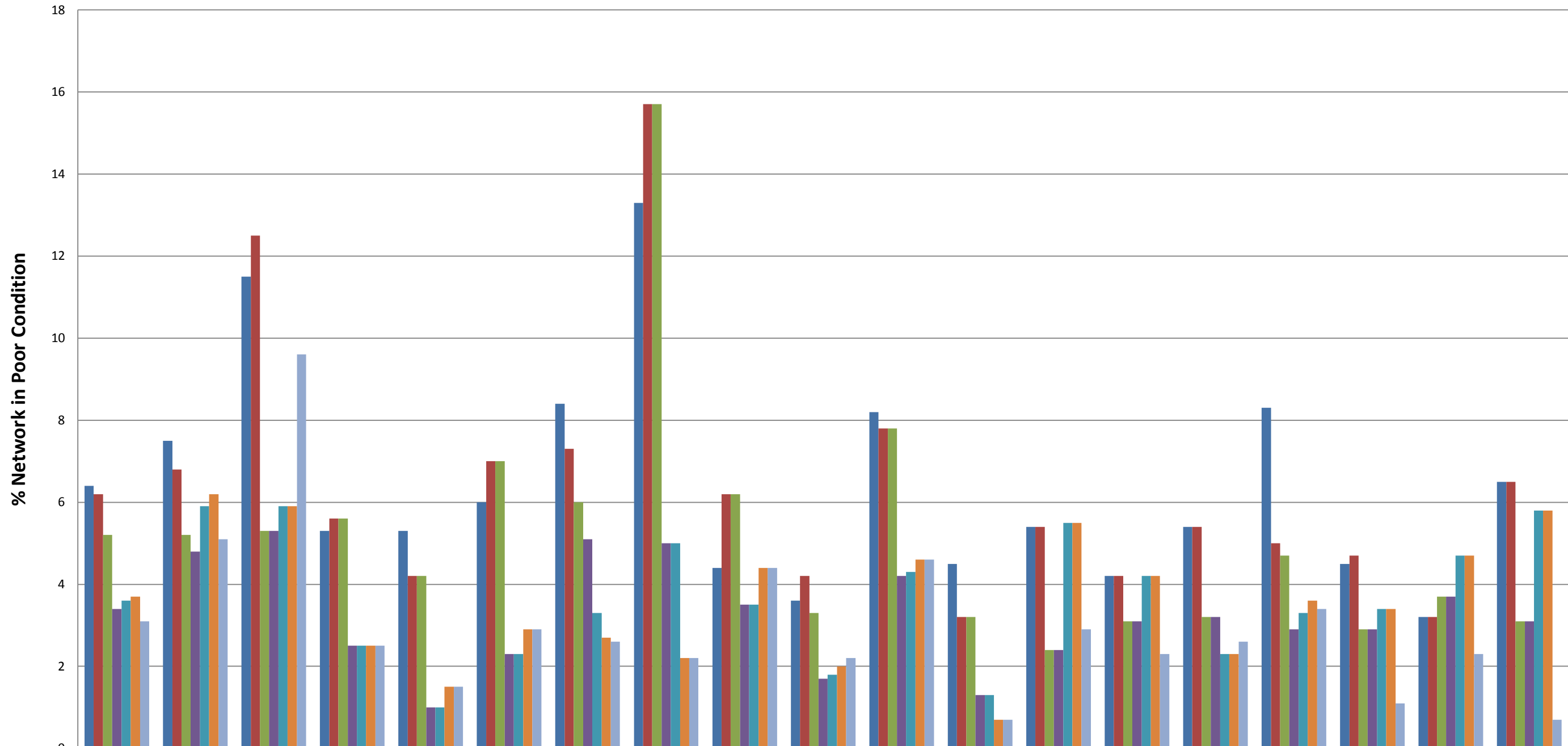
Action definitions

1. **Not Intervention** – the technician has attended site and classified the defect as not meeting intervention levels as per the Highway Inspection Manual 2013 or in the case of streetscene reports, service level agreements.
2. **Duplicate** – a report has already been received in relation to this issue and a works instruction has previously been passed to the contractor to undertake a repair/carry out the necessary works.
3. **Under Investigation** – this issue is currently with a Highways technician or engineer – they may be awaiting information from the customer or the issue requires further investigation e.g. wet weather inspection, drainage survey, exploratory excavation, ownership query.
4. **Discretionary works** – this issue is not a highway safety issue and has been identified as one which falls within the remit of the parish steward scheme.
5. **Other** – the issue has been identified as one which does not require any action by Local Highways. This could be for a number of reasons –
 - the report has been cancelled by the user,
 - there is insufficient information provided to assess the issue and the customer has not provided contact details,
 - the issue is not the responsibility of Wiltshire Council e.g. un-adopted highway, gas/electricity/telephone/water/cable company, Highways England, housing association,
 - the technician attended site and nothing was found at the stated location
 - the issue has been passed to another service within Wiltshire Council e.g. rights of way, bridges.
6. **Works Instructed** – the technician has assessed the issue as requiring works to be carried out and has either dealt with the issue personally or has referred it to the contractor for repair.

Highway defects completed in your area in recent months

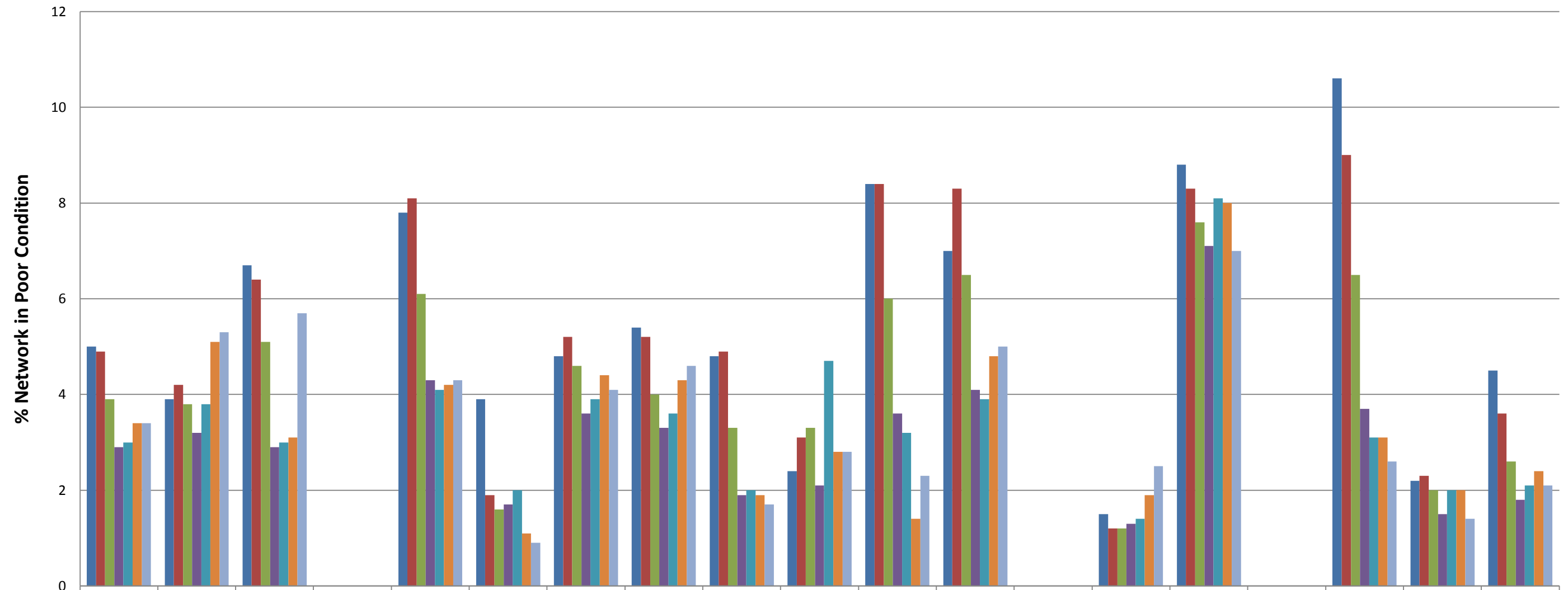


% A Road Network in Poor Condition



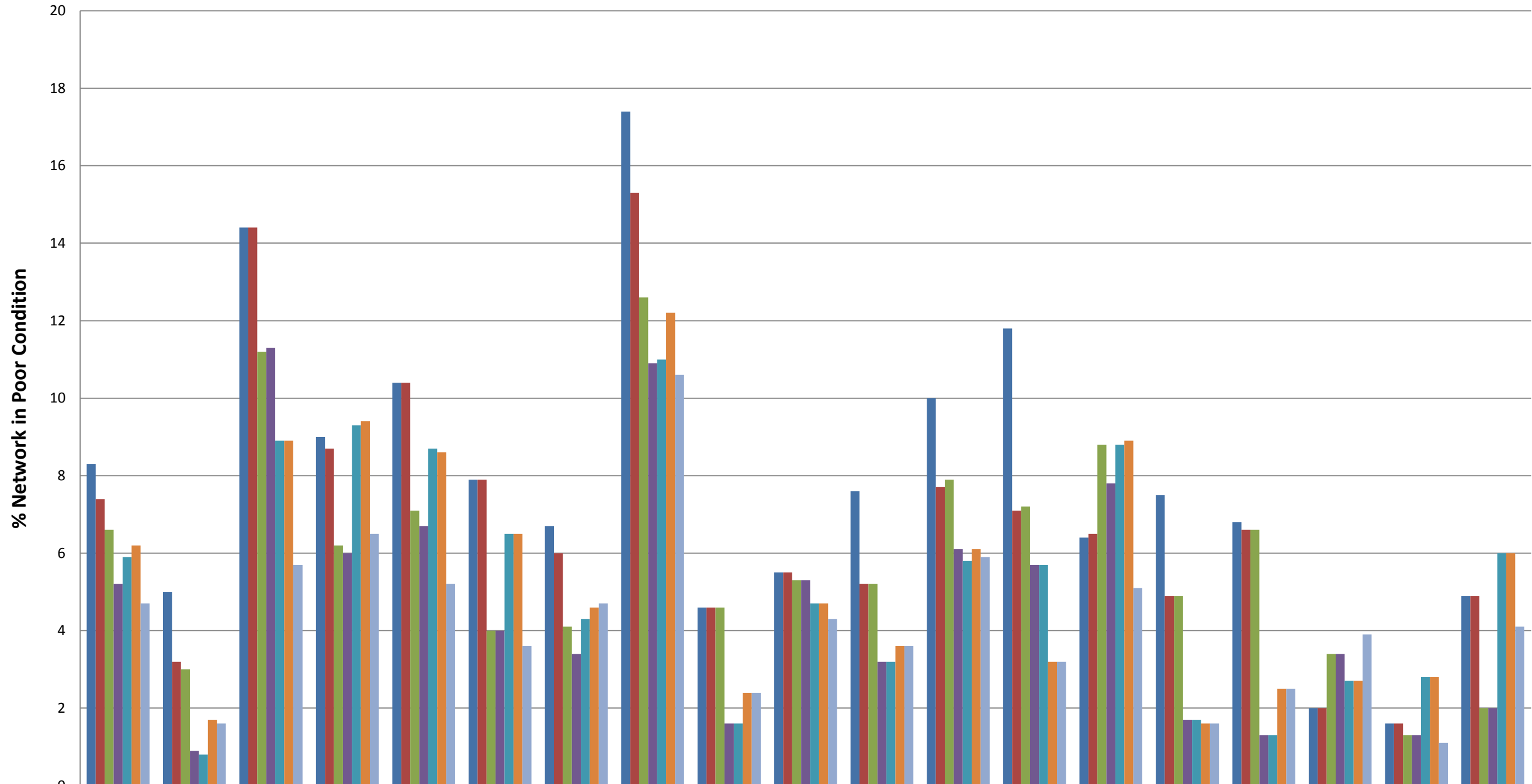
	Wiltshire	Amesbury	Bradford On Avon	Calne	Chippenham	Corsham	Devizes	Malmesbury	Marlborough	Melksham	Pewsey	Royal Wootton Bassett & Cricklade	Salisbury	South West Wiltshire	Southern Wiltshire	Tidworth	Trowbridge	Warminster	Westbury
■ 2009/10	6.4	7.5	11.5	5.3	5.3	6	8.4	13.3	4.4	3.6	8.2	4.5	5.4	4.2	5.4	8.3	4.5	3.2	6.5
■ 2010/11	6.2	6.8	12.5	5.6	4.2	7	7.3	15.7	6.2	4.2	7.8	3.2	5.4	4.2	5.4	5	4.7	3.2	6.5
■ 2011/12	5.2	5.2	5.3	5.6	4.2	7	6	15.7	6.2	3.3	7.8	3.2	2.4	3.1	3.2	4.7	2.9	3.7	3.1
■ 2012/13	3.4	4.8	5.3	2.5	1	2.3	5.1	5	3.5	1.7	4.2	1.3	2.4	3.1	3.2	2.9	2.9	3.7	3.1
■ 2013/14	3.6	5.9	5.9	2.5	1	2.3	3.3	5	3.5	1.8	4.3	1.3	5.5	4.2	2.3	3.3	3.4	4.7	5.8
■ 2014/15	3.7	6.2	5.9	2.5	1.5	2.9	2.7	2.2	4.4	2	4.6	0.7	5.5	4.2	2.3	3.6	3.4	4.7	5.8
■ 2015/16	3.1	5.1	9.6	2.5	1.5	2.9	2.6	2.2	4.4	2.2	4.6	0.7	2.9	2.3	2.6	3.4	1.1	2.3	0.7

% B Road Network in Poor Condition



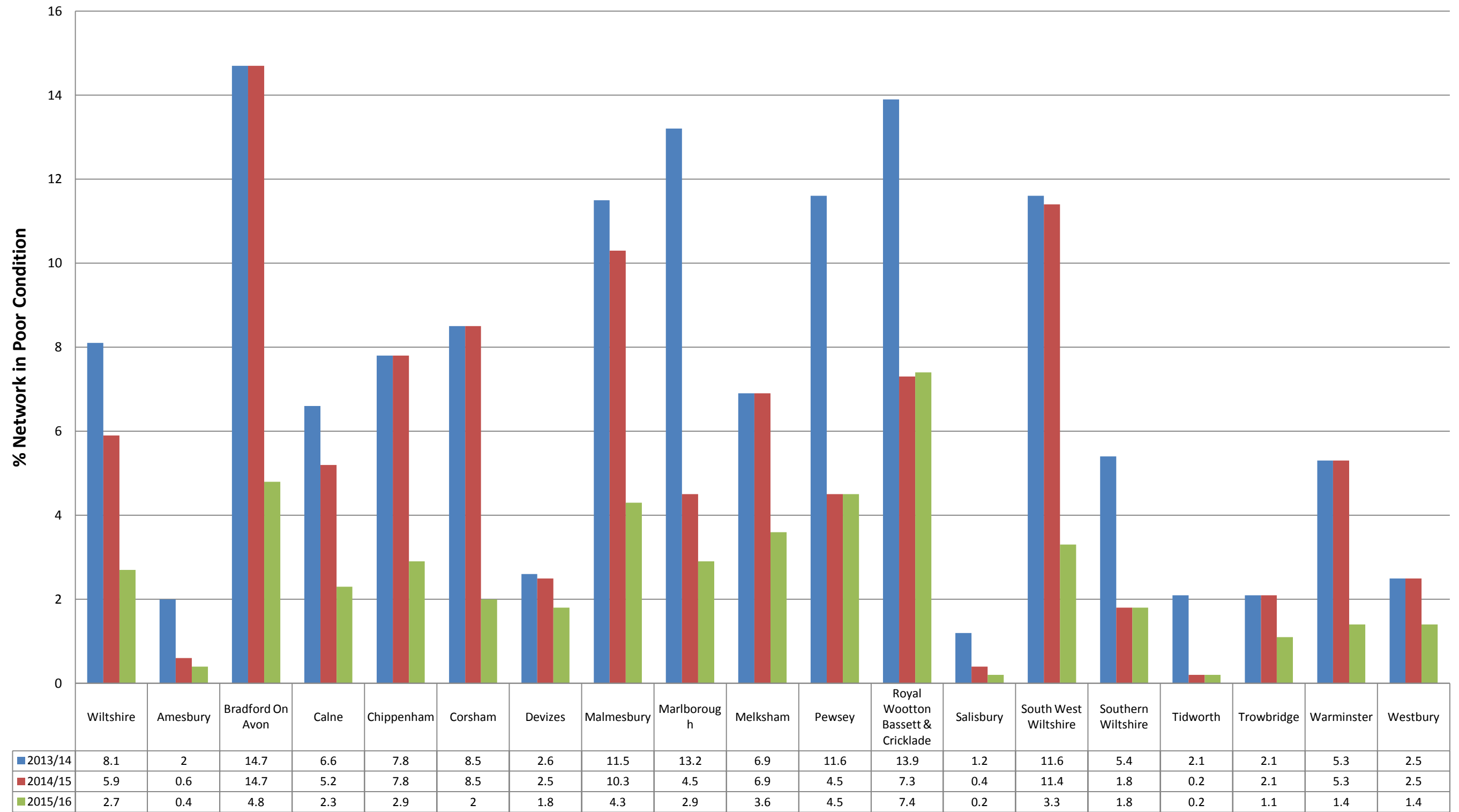
	Wiltshire	Amesbury	Bradford On Avon	Calne	Chippenham	Corsham	Devizes	Malmesbury	Marlborough	Melksham	Pewsey	Royal Wootton Bassett & Cricklade	Salisbury	South West Wiltshire	Southern Wiltshire	Tidworth	Trowbridge	Warminster	Westbury
2009/10	5	3.9	6.7	0	7.8	3.9	4.8	5.4	4.8	2.4	8.4	7	0	1.5	8.8	0	10.6	2.2	4.5
2010/11	4.9	4.2	6.4	0	8.1	1.9	5.2	5.2	4.9	3.1	8.4	8.3	0	1.2	8.3	0	9	2.3	3.6
2011/12	3.9	3.8	5.1	0	6.1	1.6	4.6	4	3.3	3.3	6	6.5	0	1.2	7.6	0	6.5	2	2.6
2012/13	2.9	3.2	2.9	0	4.3	1.7	3.6	3.3	1.9	2.1	3.6	4.1	0	1.3	7.1	0	3.7	1.5	1.8
2013/14	3	3.8	3	0	4.1	2	3.9	3.6	2	4.7	3.2	3.9	0	1.4	8.1	0	3.1	2	2.1
2014/15	3.4	5.1	3.1	0	4.2	1.1	4.4	4.3	1.9	2.8	1.4	4.8	0	1.9	8	0	3.1	2	2.4
2015/16	3.4	5.3	5.7	0	4.3	0.9	4.1	4.6	1.7	2.8	2.3	5	0	2.5	7	0	2.6	1.4	2.1

% C Road Network in Poor Condition



	Wiltshire	Amesbury	Bradford On Avon	Calne	Chippenham	Corsham	Devizes	Malmesbury	Marlborough	Melksham	Pewsey	Royal Wootton Bassett & Cricklade	Salisbury	South West Wiltshire	Southern Wiltshire	Tidworth	Trowbridge	Warminster	Westbury
2009/10	8.3	5	14.4	9	10.4	7.9	6.7	17.4	4.6	5.5	7.6	10	11.8	6.4	7.5	6.8	2	1.6	4.9
2010/11	7.4	3.2	14.4	8.7	10.4	7.9	6	15.3	4.6	5.5	5.2	7.7	7.1	6.5	4.9	6.6	2	1.6	4.9
2011/12	6.6	3	11.2	6.2	7.1	4	4.1	12.6	4.6	5.3	5.2	7.9	7.2	8.8	4.9	6.6	3.4	1.3	2
2012/13	5.2	0.9	11.3	6	6.7	4	3.4	10.9	1.6	5.3	3.2	6.1	5.7	7.8	1.7	1.3	3.4	1.3	2
2013/14	5.9	0.8	8.9	9.3	8.7	6.5	4.3	11	1.6	4.7	3.2	5.8	5.7	8.8	1.7	1.3	2.7	2.8	6
2014/15	6.2	1.7	8.9	9.4	8.6	6.5	4.6	12.2	2.4	4.7	3.6	6.1	3.2	8.9	1.6	2.5	2.7	2.8	6
2015/16	4.7	1.6	5.7	6.5	5.2	3.6	4.7	10.6	2.4	4.3	3.6	5.9	3.2	5.1	1.6	2.5	3.9	1.1	4.1

% Unclassified Road Network in Poor Condition



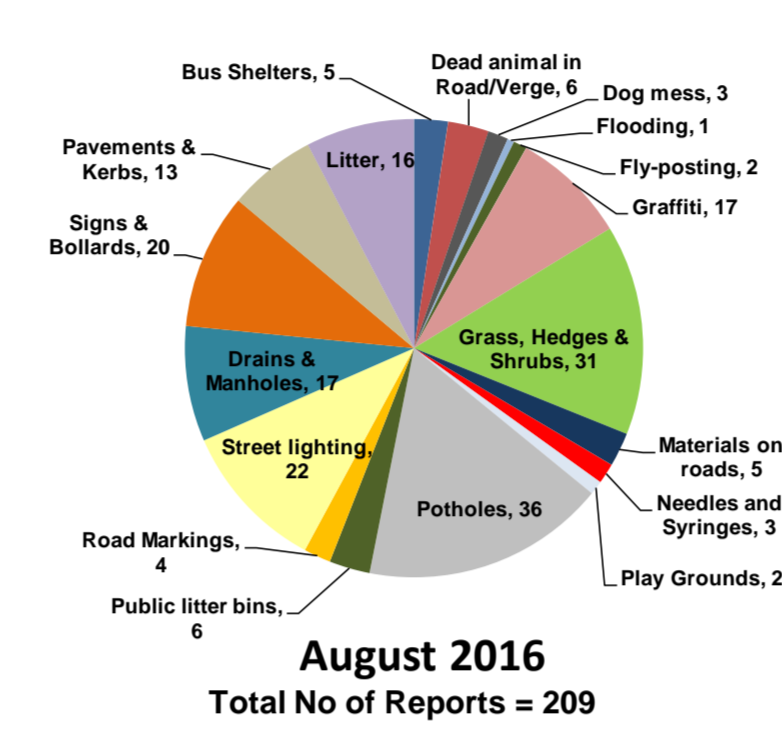
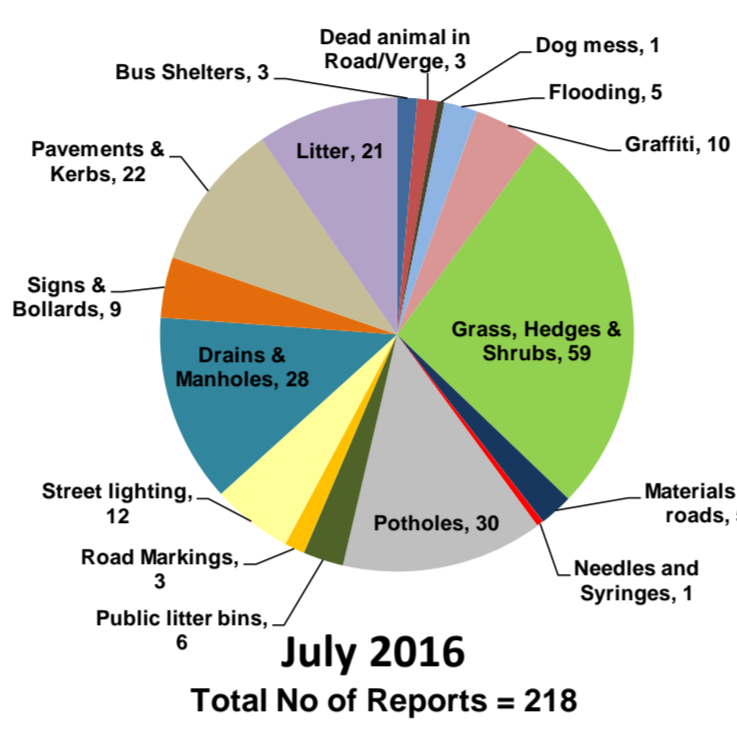
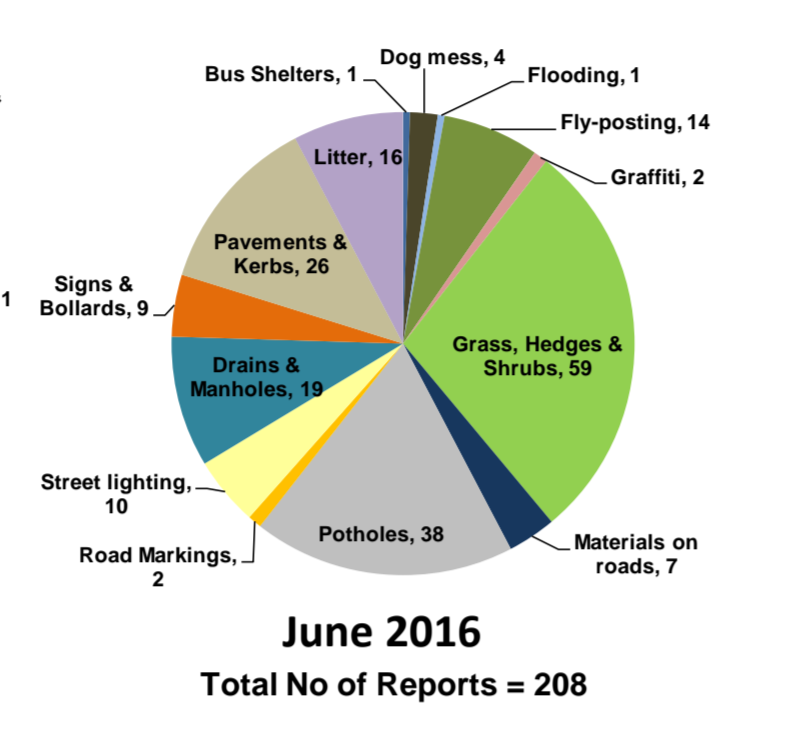
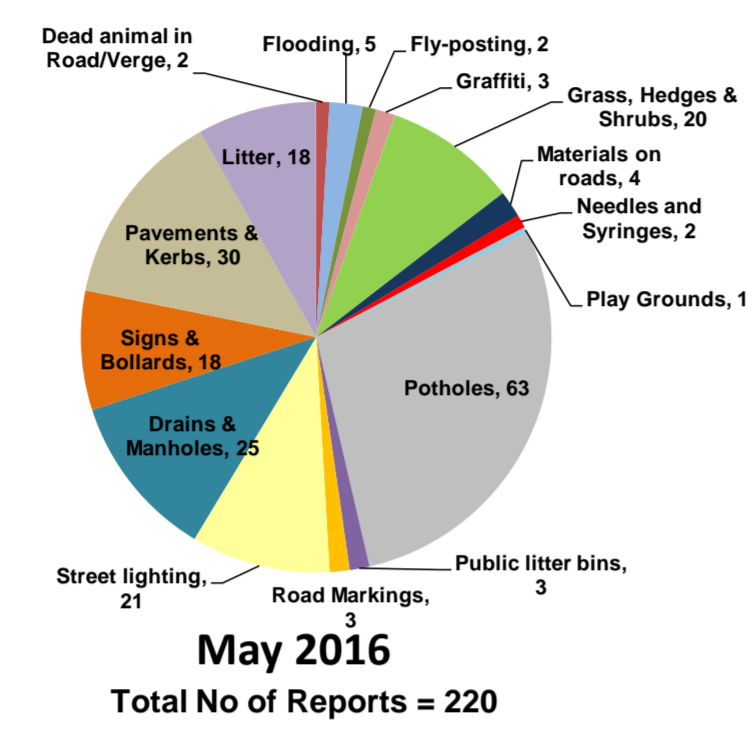
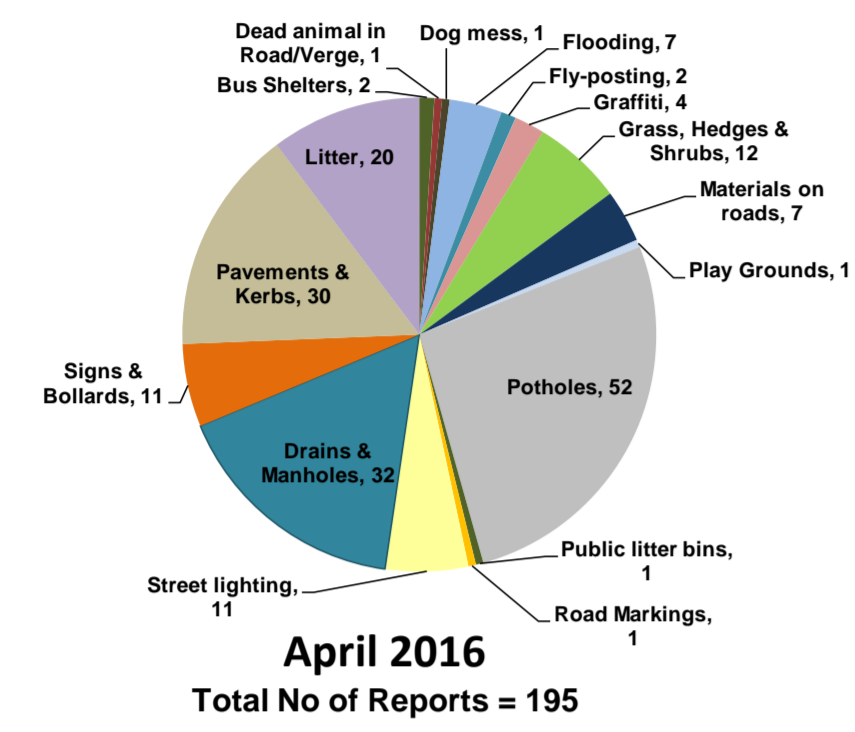
Appendix B: My Wiltshire Statistics



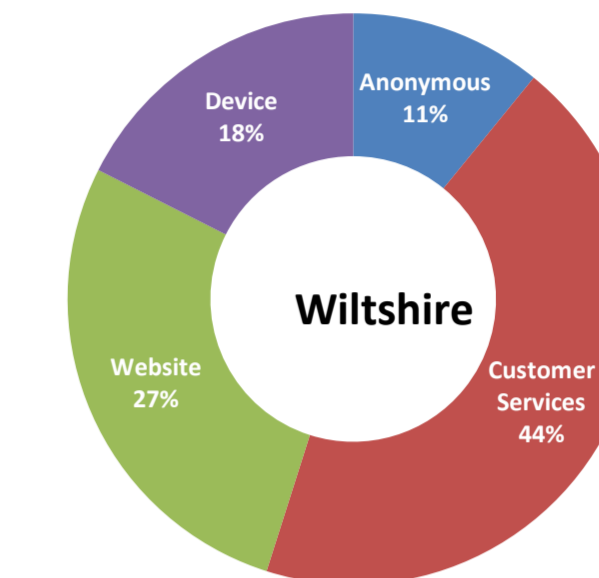
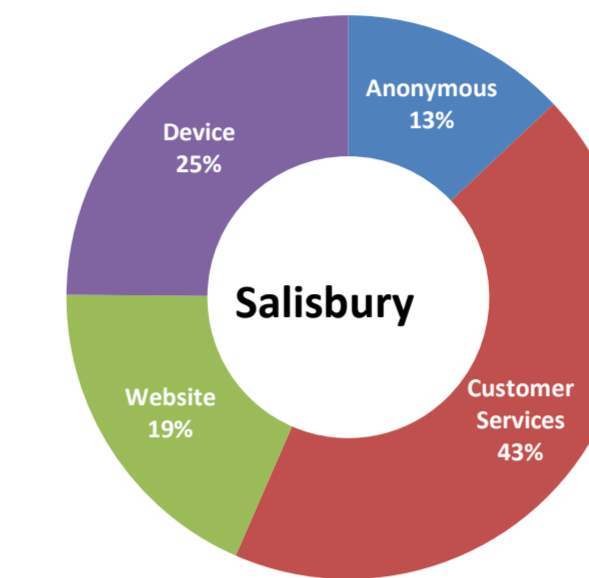
Salisbury Area Board



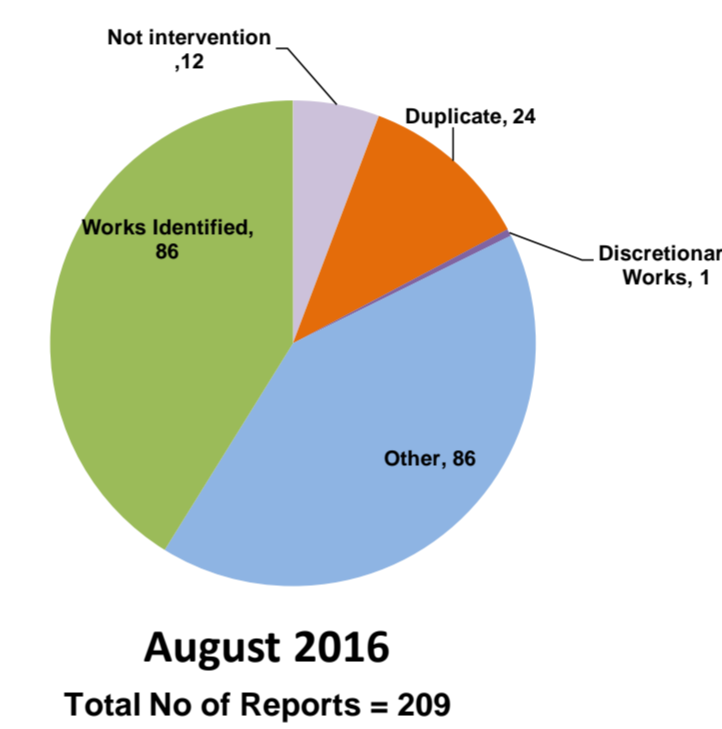
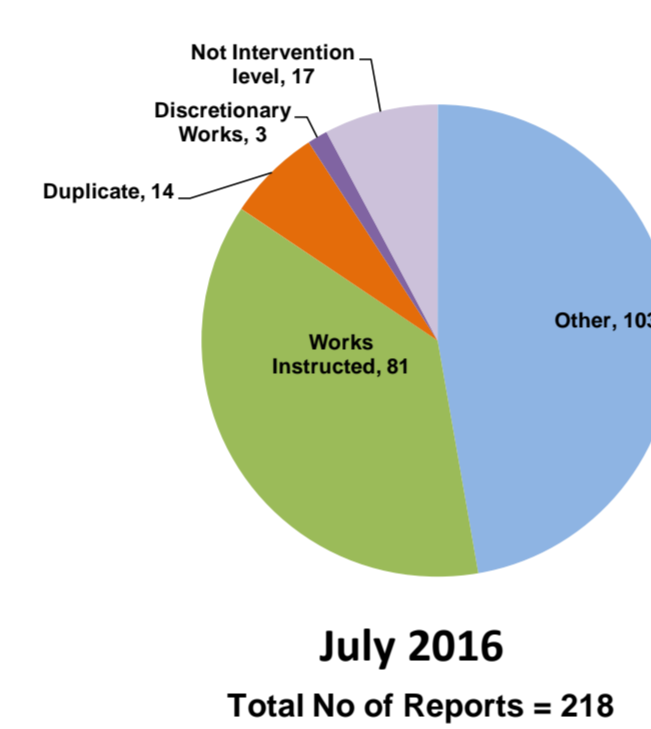
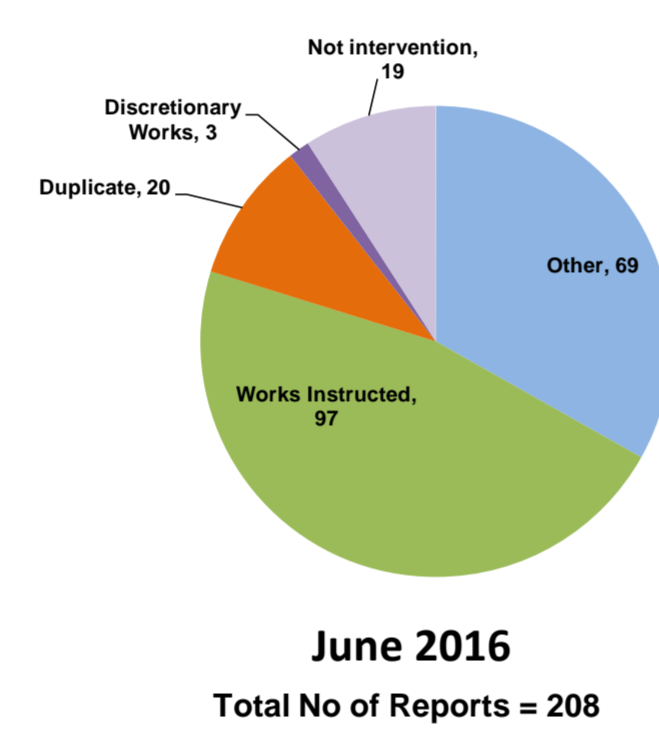
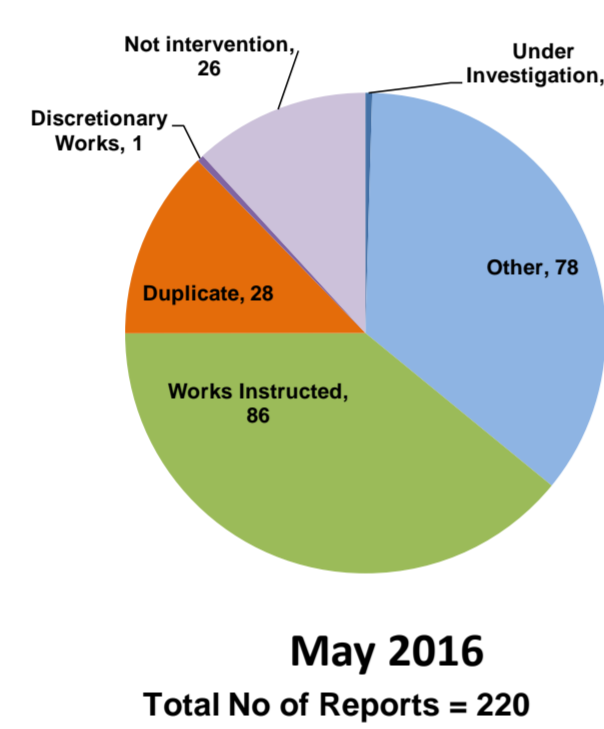
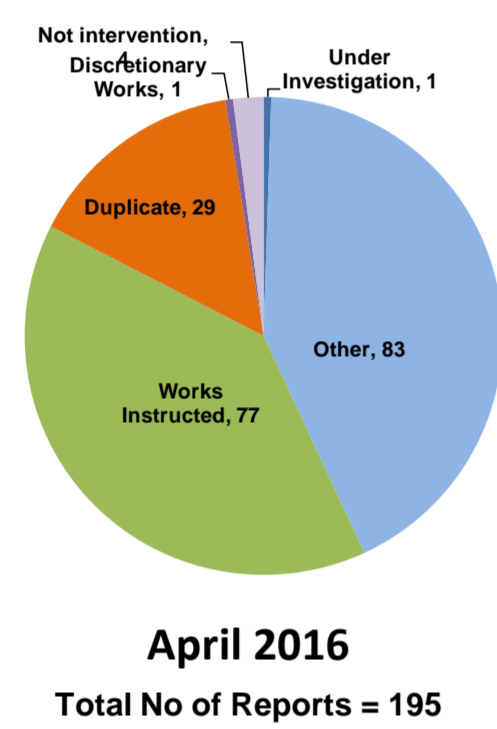
Customer Reported Issues



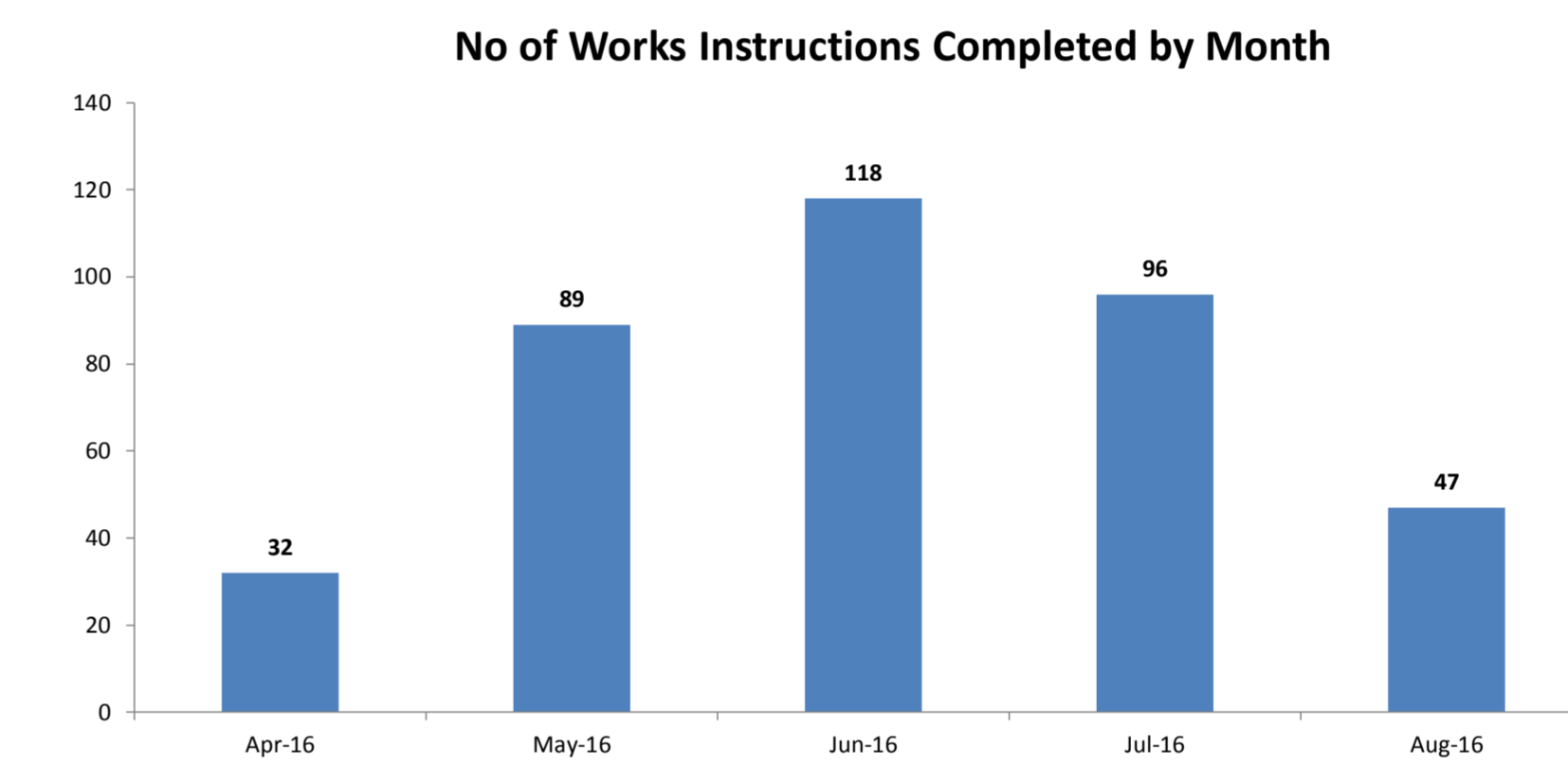
Reporting Channels



Customer Call Outcomes



Completed in Month



Safety Inspections

